

Venus®

Product Information

FREE
of BPA related
monomers



Venus® Composites
Beauty beyond aesthetics.

Giving a hand to oral health.



KULZER
MITSUI CHEMICALS GROUP

Venus® Composites

Beauty beyond aesthetics.

A new standard of care.

In recent years, the perfect smile has become a status symbol, promoting professional success and personal self-esteem. A beautiful smile not only looks good, but also make us feel good. Perfectly formed, brilliant white teeth are the basis upon which appearances are judged by many patients. Hence we have made this our goal – creating a new standard of care we can entrust only to professional hands: yours.

With our Venus product portfolio, we have raised the standards of aesthetics to a new level. Venus composites exceed the previous boundaries of aesthetics, quality and performance. We take a great deal of pride in this. Our

nano-hybrid composites, Venus Diamond and Venus Pearl, have a consistency designed to suit your own personal preferences. The other products introduced in this brochure complete the range of materials required for optimal patient care.

Venus composites are not only easy and convenient to work with; they also offer exceptional strength and aesthetic beauty, enabling the creation of professional restorations with a natural look.

Your patients will be delighted.



Perfect restorations for a perfect smile.

The breakthrough formulations of Venus Diamond and Venus Pearl offer all the features you have long been waiting for.

We deliver highly aesthetic nano-hybrid composites whatever your preference: a creamy consistency in the form of Venus Pearl, or a firmer consistency with Venus Diamond. Whichever you choose, the ease of use and outstanding physical properties remain the same.

Outstanding physical properties:

A unique matrix and newly developed nano-hybrid filler system lead to improvements in aesthetics, durability and handling. Exceptional strength, minimal shrinkage stress, very smooth surfaces, high tough resistance and optimised surface hardness are the features that render Venus composite restorations so reliable.

Pure aesthetics:

Discover the new standard of care that will help you master your daily challenges. Venus Diamond and Venus Pearl

can be used in ONE shade in preferably posterior restorations or multi shade layering techniques in the anterior. Using a multilayer technique, you can take advantage of the full range of their aesthetic benefits. Venus Diamond and Venus Pearl adapt perfectly to the colour of the surrounding tooth structure, creating an outstandingly natural look.

In contrast, Venus Diamond ONE and Venus Pearl ONE Shade are truly universal shade solutions for the majority of everyday cases. With incredible shade matching properties, ONE shade blends seamlessly into the surrounding dentition, independent of tooth shade, enabling restorations to simply disappear.

Easy and convenient handling:

Both composites are highly stable, offer a longer working time (also under the operating light) and have a very-low-stick consistency, even in the creamy format of Venus Pearl. Excellent sculptability and polishing are further features of the two composites. The creation of direct restorations is simpler and therefore more efficient on your part.



“The unique TCD-matrix is free of BPA related monomers.”

Further information:
kulzer.com/tcd-matrix



Venus® Composites

The secret to natural beauty.

Our formula for long-term aesthetics.

The excellent physical properties of Venus Diamond and Venus Pearl are derived from our unique TCD-urethane formulation and an optimised filler system. This new chemical formulation lends the new Venus composites their special properties: an innovative molecular structure delivers an unparalleled combination of extremely high resistance, exceptional flexural strength and minimal shrinkage stress. Such properties are generally seen as key factors for significantly minimising fractures and secondary caries, which are the most common reasons for having to replace direct restorations.*

Venus composites offer more than just the sum of their individual parts. The spectrum of outstanding physical properties in itself makes the composites so reliable. Dentists from around the world have testified to this.

Excellent sculptability and durability

More than five years were spent on developing the highly aesthetic nano-hybrid composite that goes by the name of Venus Diamond. Additional years of intensive effort were rewarded with the creation of a creamy alternative, called Venus Pearl. Both composites offer excellent working properties due to their special molecular structure. By combining different particle sizes, optimum filler packing density and content is achieved, resulting in high wear resistance. The use of nanoparticles enables perfect colour adaptation, ease of polish and an extremely high, long-lasting shine.

Naturally, Venus composites are compatible with all commercially available bonding agents and bonding techniques.

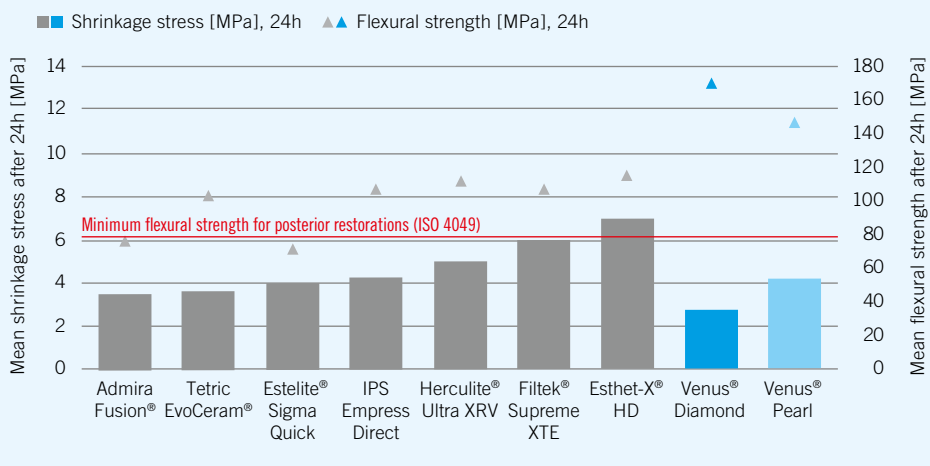
Setting new standards in dental aesthetics

Your needs set our standards. We invest our knowledge and experience in the development of products to meet the discerning demands of your patients. The properties, shades and variations of Venus composites facilitate the creation of very natural restorations – both in the anterior and posterior regions.

* Source: Bernardo M *et al.*: Survival and reasons for failure of amalgam versus composite posterior restorations placed in a randomized clinical trial. JADA, 2007, 138 (6): 775–783.



Venus Diamond & Venus Pearl: Unique combination of low shrinkage stress and high flexural strength.



Source: Kulzer R&D, Wehrheim



Venus Diamond and Venus Pearl – Making the right choice at once

Many dentists complain about the time-consuming search for the one product and shade among a mess of nearly identical and similarly illegible standard PLTs. That is why we decided on a new PLT design for our highly aesthetic Venus composites, Venus Diamond and Venus Pearl.

Because it's time to find what you're looking for. Instantly. And with certitude. It's time to grasp the right product and shade without needing a magnifier.



Venus® Composites

All for the details.

Recreating nature – with three levels of translucency.

Venus composites have unique characteristics for superior colour adaptation. The refractive index of the fillers and matrix is perfectly aligned. The result of this complex mechanism is virtually undetectable restorative margins. The materials adopt the colour of the surrounding tooth substance, achieving a completely natural look. The ultrafine filling particles allow you to achieve the best possible polish comparable to natural enamel.

The new shade concept offers you total flexibility. Simple restorations mean you can work comfortably with single-layer techniques; complex restorations demand multilayer techniques for an ideal aesthetic outcome. By individually layering opaque dentine, universal and incisal shades achieve natural looking restorations that blend with your patient's dentition – the way nature intended.

Opaque dentine shades

Opaque shades with increased colour intensity are used to cover amalgam tattoos and discoloured teeth and restore dark class V cases: OLC (Opaque Light Chromatic) – OMC (Opaque Medium Chromatic) – ODC (Opaque Dark Chromatic) – OXDC (Opaque Extra Dark Chromatic).

Universal shades

Universal shades possess colour intensities of medium translucency and are available in a large range. They can be used without additional layering or can be combined with dentine and incisal shades to achieve aesthetically pleasing results.

Incisal shades

Incisal shades are the crowning glory, offering utmost transparency and minimum colour intensity. CL (Clear) and AM (Amber) can be layered over the universal shade to create a more natural, life-like appearance. With the aid of the special incisal materials CO (Clear Opal) and YO (Yellow Opal), you can achieve the best possible aesthetic result due to the intrinsic opalescence of these shades.

Shades beyond the classic colour scale

Three bleach shades (BL = Bleach Light, BXL = Bleach Extra Light, OB = Opaque Bleach) permit aesthetic restorations to be achieved after bleaching treatments. The new Venus Pearl CORE shade has been developed for core build-ups in the posterior region, hence it has a greater depth of cure (3mm). Being green in colour, it can be clearly differentiated from the natural tooth substance, especially in the darker posterior areas, and so simplifies the ability to fix the indirect restoration on the core. The new Venus Pearl GUM shade was created for the reconstruction of gingiva in gingival recessions.

Three levels of translucency for natural looking restorations



| Opaque dentine shades | | OB | | OLC | | OMC | | ODC | | OXDC |
|-----------------------|-------------|-----|----|-----|----|--------|----|------|----|------|
| Universal shades | | BXL | BL | A1 | A2 | | A3 | A3.5 | A4 | |
| | | | | B1 | | B2 | B3 | | | |
| | | | | C1* | C2 | | C3 | | | |
| | | | | | | HKA2.5 | | | | HKA5 |
| Incisal shades | Translucent | | | | | CL | | | | |
| | | | | | | AM | | | | |
| | Opalescent | | | | | CO | | | | |
| | | | | | | YO | | | | |

* C1 is available with Venus Pearl only.

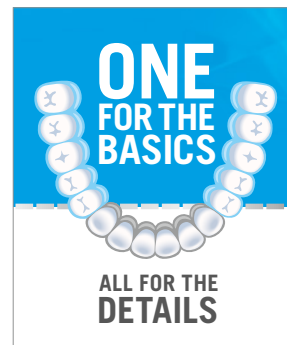
ONE for the basics.

Your one-shade solution for everyday cases.

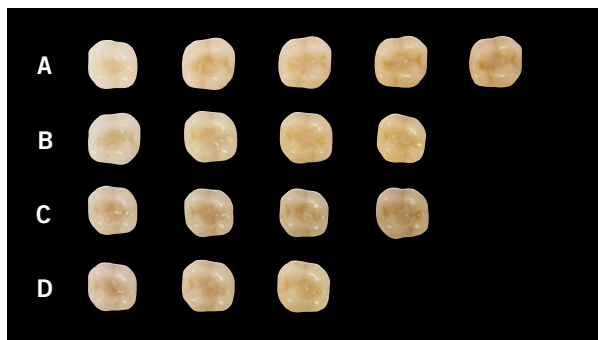
Venus Diamond ONE and Venus Pearl ONE are truly universal shade solutions for the majority of everyday cases. With incredible shade matching properties, ONE shade blends seamlessly into the surrounding dentition, independent of tooth shade, enabling restorations to simply disappear.

ONE shade for ALL – thanks to the amazing adaptive light matching

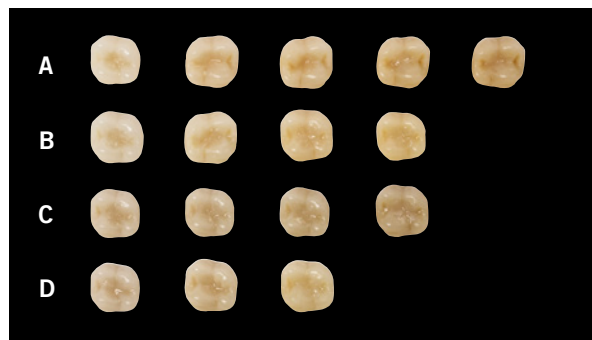
Venus Diamond/Venus Pearl ONE Shade determines the shade of the restoration by absorbing the lightwaves that are reflected by the surrounding tooth shade.



Occlusal cavities in different shaded artificial teeth filled with Venus Diamond / Venus Pearl ONE Shade.

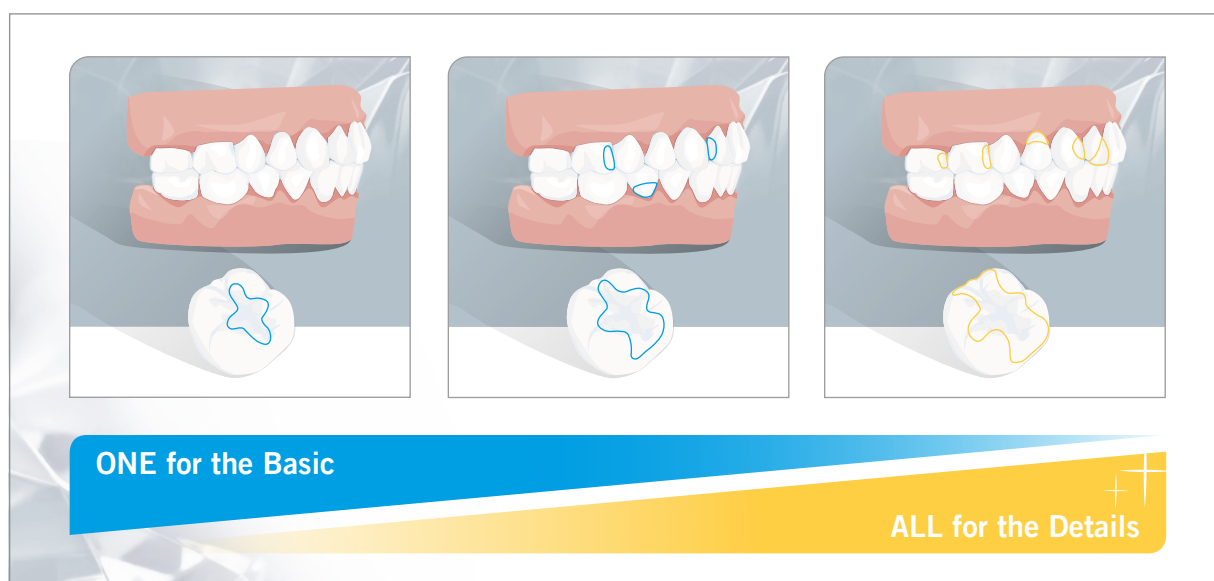


Venus Diamond ONE Shade



Venus Pearl ONE Shade

Recommendation of Venus Diamond/Pearl ONE Shade



ONE shade fits all – thanks to the amazing Adaptive Light Matching.
 Start Video: kulzer.com/one-effect

Venus® Diamond

This composite is firm. That's a promise.

Uncompromising beauty & strength.

A diamond is forever, as the saying goes. Beautiful and fascinating on the one hand, hard and durable on the other. Its nuances and sparkle require the perfect cut in order to be fully appreciated. This stunning combination of aesthetics and strength was our inspiration, guiding us towards a composite for restorations of sublime quality.

Due to its firm, low-stick consistency, Venus Diamond offers excellent sculptability and meets the highest possible demands when it comes to restorations.

Diamonds are a girl's best friend? This grade of diamond will be your patient's best friend.

Natural beauty is no secret

Absolute simplicity and ease of use:

- Firmer, low-stick consistency.
- Excellent sculptability.
- Longer working time.
- Exceptional stability.
- Simple to polish, with long-lasting lustre.
- Easy to pack in the posterior region.

▶ Making you sparkle with Venus Diamond, and gifting your patients a perfect, natural smile once more.

Venus Diamond: Durable restorations for long-lasting patient satisfaction.



Source: Prof. Dr. A Cerutti, Brescia, Italy

Source: Dr. S Sethi, Squaremile Dental Centre, London, UK

Venus® Pearl

The cream of composites.

The glowing shimmer of pearl.

The growth of a pearl is a constant miracle of nature. The unique combination of shimmering radiance and inner glow is fascinating. It is a benchmark in terms of the aesthetic requirements of many patients. And the perfect benchmark for expanding our portfolio of highly aesthetic composites.

We look to you when it comes to developing our products. Hence, with its creamy but low-stick, stable consistency Venus Pearl offers exceptional sculptability, making it the ideal companion for the most intricate of tasks.

The secret to Venus Pearl's greater malleability is the adapted filler system. Your aesthetic restorations are the secret behind your patient's smile.

A superior material for superior results

Absolute simplicity and ease of use:

- Creamy, low-stick consistency.
- Excellent sculpting and polishing properties.
- Sufficiently long working time.
- Exceptional stability.
- Optimised filler system for a perfect shimmer.
- Allows brushing techniques in the anterior region.

▶ A permanently beautiful smile for your patients, and ease of use for you.

Venus Pearl: Pure aesthetics that anyone can enjoy.



Source: Krueger-Janson U, Frankfurt am Main, Germany



Source: Wolfgang Boer, Euskirchen, Germany

Venus Pearl
ONE Shade

Venus® Diamond Flow

The flowable composite for all-round aesthetics.

Aesthetics and perfection to the smallest detail.

An increasing number of dentists prefer flowable composites for very easy placement of minimally invasive restorations. Hence we have developed Venus Diamond Flow: a flowable nano-hybrid composite to help you create beautiful, long-lasting restorations.

Whether for filling smaller cavities, cervical defects or as a baseliner combined with composites such as Venus Diamond or Venus Pearl, the enhanced viscosity of Venus Diamond Flow leaves nothing to be desired.

You'll be delighted, and so will your patients.

Due to its flow properties and thixotropic consistency, Venus Diamond Flow is highly versatile:

- Optimal workability.
 - Smooth, even surfaces in highly inaccessible areas of a cavity.
 - Controlled, precise application.
 - Thixotropic properties prevent unwanted flux, helping Venus Diamond Flow retain its shape and position after application and making it ideal for class V restorations.
 - Perfect preparation for paste composites, e.g. Venus Diamond or Venus Pearl.
 - Available in syringes and PLTs.
- ▶ Excellent working properties to enhance your daily practice.

The outstandingly natural look of the Venus product range:

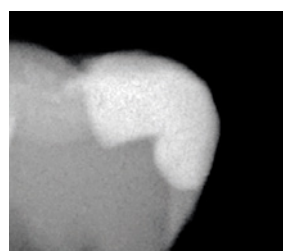
- Blending perfectly with the surrounding teeth.
- 12 different shades with three levels of translucency.
- The white, highly opaque Venus Diamond Flow Base-liner, as a cavity liner, is ideal for marking the floor of a posterior cavity.
- Beautiful, permanent lustre.
- Excellent polishing properties.

- ▶ Perfect aesthetics to give your patient a radiant smile. Just for you.

Excellent results in every class:

- Outstanding flexural strength.
- Minimal shrinkage stress.
- Exceptional stability.
- High radiopacity, ensuring a reliable diagnosis.
- Compatible with all bonding agents and composites based on (meth)acrylate.

- ▶ The superior physical properties of Venus Diamond Flow for sophisticated restorative solutions.

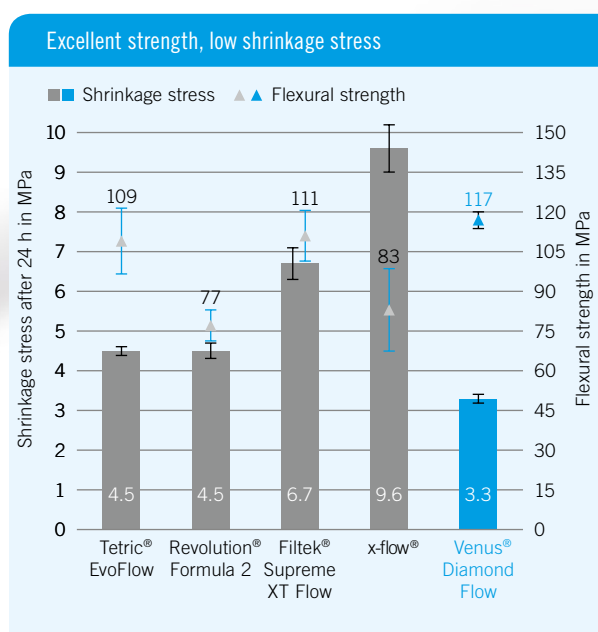


On X-ray, distinct separation between Venus Diamond and Venus Diamond Flow and the residual tooth structure.

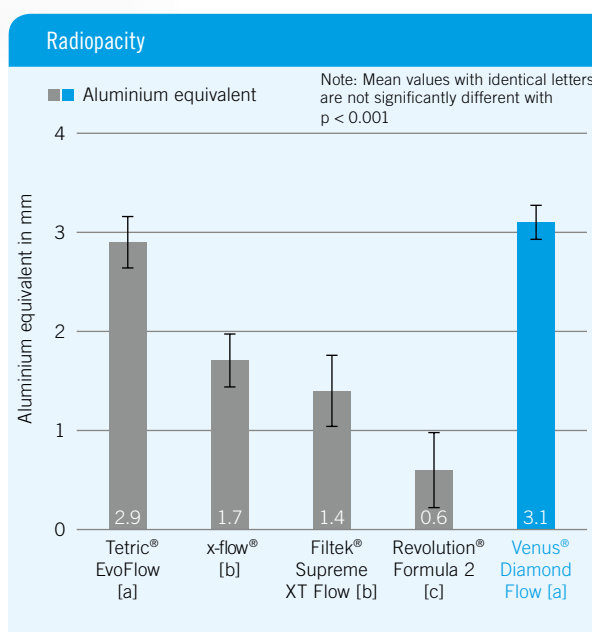
Ideal working properties and optimal aesthetics with Venus Diamond Flow.



Source: Krueger-Janson U, Frankfurt am Main, Germany



Source: Kulzer R&D, Wehrheim, Germany. Unpublished data. Documentation available.



Source: Dr. P Yamen, University of Michigan, Ann Arbor, MI, USA: "Radiopacity of an Experimental Flowable Composite Compared to Four Currently Available Flowable Composites." September 2009. Documentation available.

Venus® Supra

The long-lasting high-gloss polisher system:

- Two-step polishing system consists of pre- and high-gloss variants in different shapes
- Made of silicone highly filled with microfine diamond powder
- Tailor-made for Venus composites
- Universal solution for all anterior and posterior restorations, giving them an aesthetic shine and smooth surfaces
- Autoclavable and reusable



New twist shapes



Venus® Color

As individual as your patients.

A touch of colour for a captivating smile.

A touch of colour is sometimes needed to restore your patient's outward appearance. Whether recreating cracks in enamel, discoloured fissures or white spots, your restorations will look entirely natural. Venus Color is the ideal accessory to our nano-hybrid composites Venus Diamond and Venus Pearl.



To recreate your patient's natural, individual look, we provide Venus Color in five different shades:

- Choco
- Amber
- Corn
- Blue
- White

Aesthetics demands individuality

Venus Color is available in five shades, for natural-looking teeth:

- Flowable composite for the characterisation of the Venus product portfolio.
- Developed in close cooperation with opinion leaders and dentists worldwide.
- Offering almost unlimited creativity.
- Simple and precise dispensing.
- Suitable for direct and indirect composite restorations.
- Applicable in thin layers.
- Can be further diluted with a flowable composite for reduced colour intensity, e.g. with Venus Diamond Flow shade CL.

► Aesthetic dental treatments for patients with high expectations – enhancing their appearance, and your reputation.

Your patients will be amazed to find that their dentist is an artist at heart.



Pre-operative Situation



Application of Venus Color in shade White



Final situation

Source: Dr. J Garlichs, Kiel, Germany

Venus Color Syringe Assortment

1 x 1 g syringe of the shades: white, blue, corn, amber, choco
Art.-No.: 66054221

The Venus Color shades – characteristically intense

| Shades | Syringe |
|--------|----------|
| | 1 x 1 g |
| White | 66054206 |
| Blue | 66054207 |
| Corn | 66054208 |
| Amber | 66054209 |
| Choco | 66054210 |



Venus® Diamond

Product range.

Venus Diamond

Venus Diamond ONE Kit – Syringe

2x4g syringes of Venus Diamond in shade ONE

1x4 ml bottle of iBOND Universal

iBOND Universal Pictorial Card

Art.-No.: 66081842



Venus Diamond ONE Kit – PLT

30x0.25g PLT of Venus Diamond in shade ONE

1x4 ml bottle of iBOND Universal

iBOND Universal Pictorial Card

Art.-No.: 66081843



Venus Diamond Shade Guide

Art.-No.: 66039004

The Venus Diamond shades – uncompromising beauty

| Shades | Syringe | PLT | PLT |
|----------------------------------|----------|----------|----------|
| | 1x4g | 20x0.25g | 10x0.25g |
| Universal shades | | | |
| A1 | 66035471 | 66039008 | |
| A2 | 66035472 | 66039009 | |
| A3 | 66035474 | 66039011 | |
| A3.5 | 66035475 | 66039012 | |
| A4 | 66035476 | | 66039013 |
| B1 | 66035478 | 66039015 | |
| B2 | 66035479 | 66039016 | |
| B3 | 66035480 | | 66039017 |
| C2 | 66035481 | 66039018 | |
| C3 | 66035482 | | 66039019 |
| D3 | 66035483 | | 66039020 |
| HKA2.5 | 66035473 | 66039010 | |
| HKA5 | 66035477 | | 66039014 |
| ONE | 66081838 | 66081839 | |
| Opaque dentine shades | | | |
| OL (Opaque Light) | 66035484 | | 66039021 |
| OLC (Opaque Light Chromatic) | 66046735 | | 66046731 |
| OM (Opaque Medium) | 66035485 | 66039022 | |
| OMC (Opaque Medium Chromatic) | 66046736 | | 66046732 |
| OD (Opaque Dark) | 66035486 | 66039023 | |
| ODC (Opaque Dark Chromatic) | 66046737 | | 66046733 |
| OXDC (Opaque Ex. Dark Chromatic) | 66046738 | | 66046734 |
| Incisal shades | | | |
| CL (Clear Light) | 66035490 | | 66039027 |
| AM (Amber) | 66035491 | | 66039028 |
| CO (Clear Opal) | 66035492 | | 66039029 |
| YO (Yellow Opal) | 66035493 | | 66039030 |
| Bleach shades | | | |
| BL (Bleach Light) | 66035487 | | 66039025 |
| BXL (Bleach Extra Light) | 66035488 | | 66039026 |
| OB (Opaque Bleach) | 66035489 | | 66039024 |

Venus® Pearl

Product range.

Venus Pearl

Venus Pearl ONE Kit – Syringe

2x3g syringes of Venus Pearl in shade ONE
 1x4 ml bottle of iBOND Universal
 iBOND Universal Pictorial Card
 Art.-No.: 66081840



Venus Pearl ONE Kit – PLT

30x0.2g PLT of Venus Pearl in shade ONE
 1x4 ml bottle of iBOND Universal
 iBOND Universal Pictorial Card
 Art.-No.: 66081841



Venus Pearl PLT Masters Kit

10x0.2g PLTs of the shades: A1, A2, A3, A3.5, A4, HKA2.5
 5x0.2g PLTs of the shades: B1, B2, B3, C1, C2, C3, D3, CL, AM, CO, YO, OLC, OMC, ODC, OXDC, BL, BXL, OB, GUM, HKA5
 5x0.3g PLTs of the shade: CORE
 2x1.8g Venus Diamond Flow Syringe Baseline
 Shade Guide, Layering Guide
 Art.-No.: 66048214

Venus Pearl Shade Guide

Art.-No.: 66055463

The Venus Pearl shades – the natural look that lasts

| Shades | Syringe | PLT |
|-------------------------|----------|----------|
| | 1x3g | 20x0.2g |
| Universal shades | | |
| A1 | 66048175 | 66048090 |
| A2 | 66048176 | 66048141 |
| A3 | 66048178 | 66048143 |
| A3.5 | 66048179 | 66048144 |
| A4 | 66048180 | 66048145 |
| B1 | 66048182 | 66048147 |
| B2 | 66048183 | 66048148 |
| B3 | 66048184 | 66048149 |
| C1 | 66048185 | 66048150 |
| C2 | 66048186 | 66048161 |
| C3 | 66048187 | 66048162 |
| D3 | 66048188 | 66048163 |
| HKA2.5 | 66048177 | 66048142 |
| HKA5 | 66048181 | 66048146 |
| ONE | 66081836 | 66081837 |

| Shades | Syringe | PLT |
|----------------------------------|----------|-----------|
| | 1x3g | 10x0.2g |
| Opaque dentine shades | | |
| OLC (Opaque Light Chromatic) | 66048189 | 66048164 |
| OMC (Opaque Medium Chromatic) | 66048190 | 66048165 |
| ODC (Opaque Dark Chromatic) | 66048191 | 66048093 |
| OXDC (Opaque Ex. Dark Chromatic) | 66048192 | 66048094 |
| Incisal shades | | |
| CL (Clear Light) | 66048196 | 66048098 |
| AM (Amber) | 66048197 | 66048099 |
| CO (Clear Opal) | 66048198 | 66048100 |
| YO (Yellow Opal) | 66048199 | 66048171 |
| Bleach and special shades | | |
| BL (Bleach Light) | 66048193 | 66048096 |
| BXL (Bleach Extra Light) | 66048194 | 66048097 |
| OB (Opaque Bleach) | 66048195 | 66048095 |
| CORE | 66048200 | 66048172* |
| GUM | 66048201 | 66048173 |

* 10x0.3g.

Venus® Diamond Flow/Venus® Supra

Product range.

Venus Diamond Flow

Venus Diamond Flow Syringe Assortment

1 x 1.8g syringe of the shades:

A1, A2, A3, Baseline

Art.-No.: 66040353

The Venus Diamond Flow shades – flowable aesthetic

| Shades | Syringe | PLT |
|--------------------------|----------|----------|
| | 1 x 1.8g | 20x0.2g |
| A1 | 66040354 | 66040368 |
| A2 | 66040355 | 66040369 |
| A3 | 66040358 | 66040371 |
| A3.5 | 66040359 | 66040372 |
| A4 | 66040360 | 66040373 |
| B2 | 66040362 | 66040375 |
| HKA2.5 | 66040357 | 66040370 |
| HKA5 | 66040361 | 66040374 |
| OM (Opaque Medium) | 66040363 | 66040376 |
| CL (Clear) | 66040364 | 66040377 |
| BXL (Bleach Extra Light) | 66040365 | 66040378 |
| Baseline | 66041052 | 66041051 |



Venus® Supra

The simple way to high gloss.



| Article | Art. Code |
|--|-----------|
| Intro Kit | |
| Venus Supra Intro Kit 2x5 1 pre and 1 high gloss polisher of each shape (Flame, Cup, Large Flame, Twist Brush, Twist Disc) | 66087541 |
| New Shapes | |
| Venus Supra Refill Pre Twist Disc 10 pre polishers of shape Twist Disc | 66093899 |
| Venus Supra Refill Gloss Twist Disc 10 high gloss polishers of shape Twist Disc | 66093900 |
| Venus Supra Refill Pre Twist Brush 10 pre polishers of shape Twist Brush | 66093901 |
| Venus Supra Refill Gloss Twist Brush 10 high gloss polishers of shape Twist Brush | 66093902 |
| New Refills | |
| Venus Supra Refill Pre Cup 10 pre polishers of shape Cup | 66093893 |
| Venus Supra Refill Gloss Cup 10 high gloss polishers of shape Cup | 66093894 |
| Venus Supra Refill Pre Flame 10 pre polishers of shape Flame | 66093895 |
| Venus Supra Refill Gloss Flame 10 high gloss polishers of shape Flame | 66093896 |
| Venus Supra Refill Pre Large Flame 10 pre polishers of shape Large Flame | 66093897 |
| Venus Supra Refill Gloss Large Flame 10 high gloss polishers of shape Large Flame | 66093898 |



iBOND® Universal – All-purpose convenience.

Our definition of universal bonding is convenience:

- **Unique moisture control and instant bonding success:** Due to the unique moisture control system and optimised monomer blend, iBOND Universal offers excellent dentine penetration and reliable bond strength.
- **The all-rounder for bonding matters:** iBOND Universal enables bonding of composite, precious metal, non-precious metal, zirconia or glass ceramic, and is compatible with light-cure, dual-cure and self-cure materials.
- **Easy and precise application:** Self-etch, total-etch or selective etch – the choice is yours. In addition, our specially designed drop control delivers just the amount of bonding agent you need.



Contact in Germany

Kulzer GmbH
Leipziger Straße 2
63450 Hanau
Germany
info.dent@kulzer-dental.com

Admira® Fusion is a registered Trademark of VOCO GmbH • Tetric®, Tetric EvoCeram® and IPS Empress Direct® are trademarks of Ivoclar Vivadent AG • Estelite® Sigma Quick is a trademark of Tokuyama Dental Corporation Inc. • Herculite®, XRV Ultra™ and Revolution® are trademarks of Kerr Corporation • Filtek® is a trademark of 3M Company • Spectrum®, TPH® and x-flow® are trademarks of Dentsply DeTrey GmbH • Esthet-X® is a trademark of Dentsply Sirona Inc.

FREE
of BPA related
monomers



Venus® Composites
Beauty beyond aesthetics.

Giving a hand to oral health.



KULZER
MITSUI CHEMICALS GROUP

iBOND® Universal – All-purpose convenience.

Our definition of universal bonding is convenience:

- **Unique moisture control and instant bonding success:** Due to the unique moisture control system and optimised monomer blend, iBOND Universal offers excellent dentine penetration and reliable bond strength.
- **The all-rounder for bonding matters:** iBOND Universal enables bonding of composite, precious metal, non-precious metal, zirconia or glass ceramic, and is compatible with light-cure, dual-cure and self-cure materials.
- **Easy and precise application:** Self-etch, total-etch or selective etch – the choice is yours. In addition, our specially designed drop control delivers just the amount of bonding agent you need.



Contact in Germany

Kulzer GmbH
Leipziger Straße 2
63450 Hanau
Germany
info.dent@kulzer-dental.com

Admira® Fusion is a registered Trademark of VOCO GmbH • Tetric®, Tetric EvoCeram® and IPS Empress Direct® are trademarks of Ivoclar Vivadent AG • Estelite® Sigma Quick is a trademark of Tokuyama Dental Corporation Inc. • Herculite®, XRV Ultra™ and Revolution® are trademarks of Kerr Corporation • Filtek® is a trademark of 3M Company • Spectrum®, TPH® and x-flow® are trademarks of Dentsply DeTrey GmbH • Esthet-X® is a trademark of Dentsply Sirona Inc.