

m[®]
two

The efficient NiTi system



Power in Control



Intelligent Design – Superior Cutting Efficiency and Flexibility

For an efficient root canal preparation

Each instrument has a specific design to ensure fast and safe preparation.



- **Reliable mechanical glide path preparation with instrument sizes 10/.04 and 15/.05**

Large, constant helical angle and hence more spirals for increased instrument stability.

- **Efficient dentine removal and precise shaping with instrument sizes 20/.06 and 25/.06**

Active cutting blades and a progressive pitch enable efficient dentine removal and excellent lateral cutting ability.

- **Effective preparation without unnecessary loss of tooth substance with instrument sizes 30/.05, 35/.04, 40/.04**

The instruments' reduced taper means the apical third is enlarged without unnecessarily weakening the tooth. Increased safety due to minimum stress.

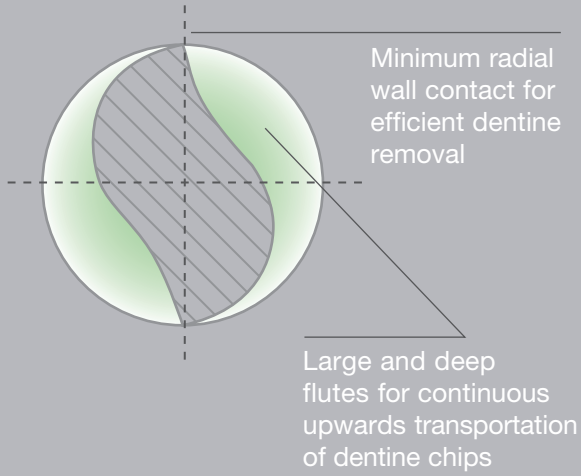
- **Trouble-free preparation of larger canals with instruments such as the 50/.04 or 40/.06**

A reduced cross-section for instruments with larger ISO sizes and tapers ensures instrument flexibility and safe root canal preparation.

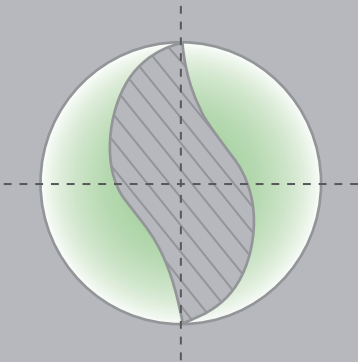


S-shaped cross-section with two active cutting edges

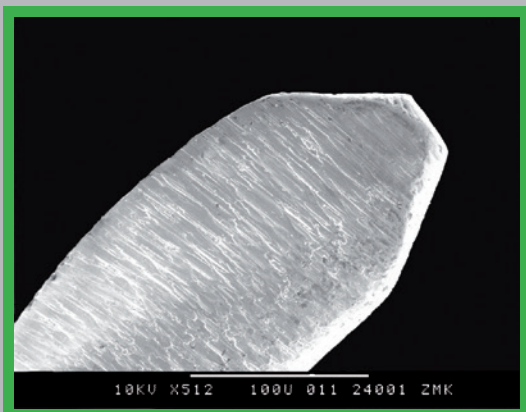
- Small instrument core for high flexibility



- Reduced cross-section for M_{two}[®] instruments with larger ISO sizes and greater tapers such as the M_{two}[®] 40/.06



Non-cutting tip



10/.04

25/.06

Small pitch, more cutting edges

Progressive pitch

A small pitch and thus more cutting edges enables increased instrument stability.

A progressive pitch allows for high lateral cutting efficiency and prevents undesired screw-in effect.

One easy and safe system from preparation to obturation

01. Root canal preparation

Easy to switch from manual to mechanical root canal preparation

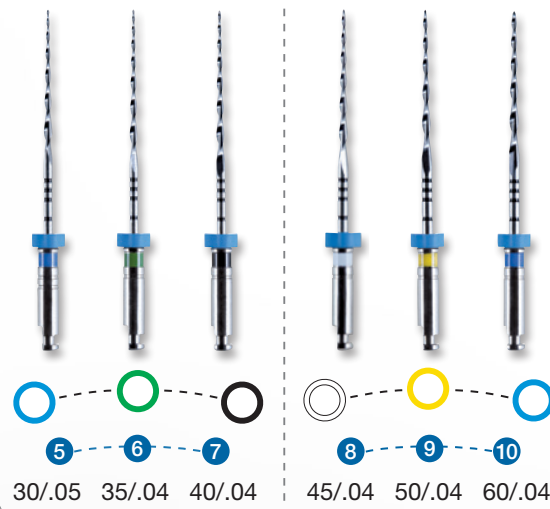
- Simple: One sequence for all canals.
- Single Length: All instruments are brought to full working length.
- Simultaneous Shaping: Mtwo® cuts automatically while advancing apically and also laterally when using a brushing file movement.
- Well thought through system: Each instrument creates a glide path for the next one.
- No unnecessary loss of tooth substance: Mtwo® only removes as much substance as necessary.

Advantages: reliable mechanical glide path, efficient dentine removal, effective shaping and safe preparation of all canal anatomies.

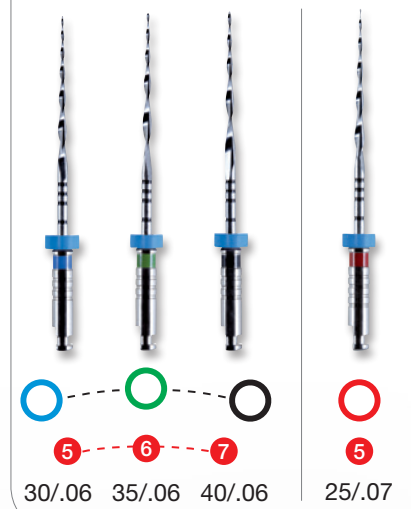
Basic Sequence



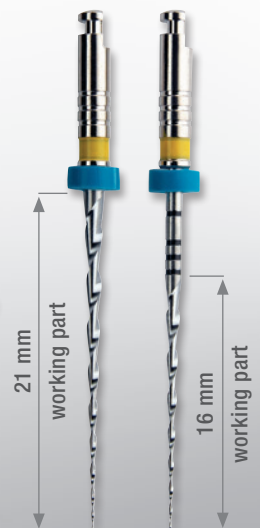
Shaping of Larger Canal Anatomies 1



Shaping of Larger Canal Anatomies 2



Unique
The basic sequence is available in working part lengths 16 mm and 21 mm (working length 25 mm)



02. Root canal drying and obturation

Mtwo® instruments fulfil shaping requirements for all obturation techniques.



Sterile Mtwo® Paper Points
Tapered paper points suitable for the Mtwo® NiTi system for efficient root canal drying.



Mtwo® Gutta-Percha

α-gutta-percha perfectly in line with Mtwo® preparation.



GUTTAFUSION®

Obturator made entirely of gutta-percha for easy and fast three-dimensional filling.



BeeFill® 2in1

Warm vertical condensation with Mtwo® Gutta-Percha and backfill for a long-term dense and three-dimensional filling.



03. Retreatment

Mtwo® Retreatment files for efficient removal of filling material



Retreatment file with cutting tip

R 25/.05 for wide and medium canals

R 15/.05 for narrow canals



R 25/.05



R 15/.05

Mtwo® Products

Basic Sequence

Blister of 6 instruments

STERILE



Size/Taper		Mtwo® working part 16 mm		Mtwo® working part 21 mm	
		21 mm	25 mm	25 mm	31 mm
10/.04	●	0234 021 010	0234 025 010	1234 025 010	1234 031 010
15/.05	○	0235 021 015	0235 025 015	1235 025 015	1235 031 015
20/.06	○	0236 021 020	0236 025 020	1236 025 020	1236 031 020
25/.06	●	0236 021 025	0236 025 025	1236 025 025	1236 031 025

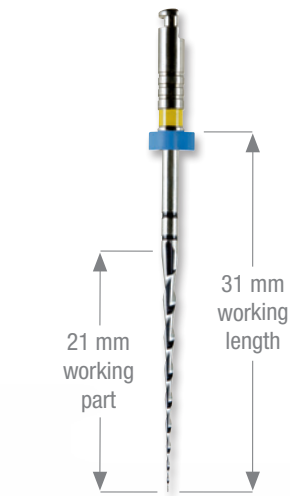
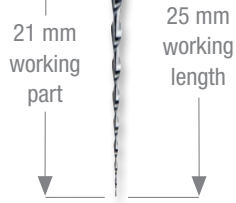
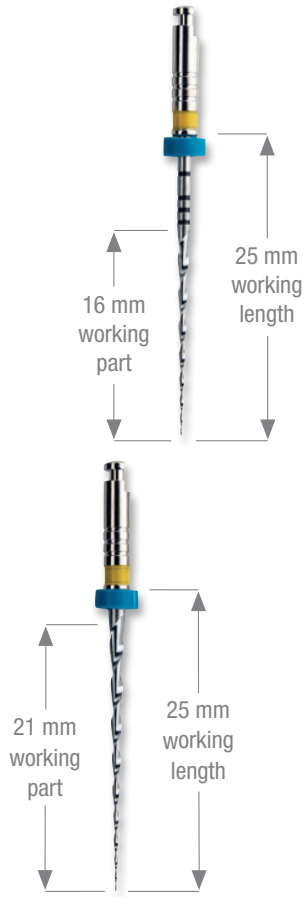
Shaping of Larger Canal Anatomies

Blister of 6 instruments

STERILE



Size/Taper		Mtwo® working part 16 mm		Mtwo® working part 21 mm	
		21 mm	25 mm	25 mm	31 mm
30/.05	●	0235 021 030	0235 025 030	1235 031 030	
35/.04	●	0234 021 035	0234 025 035	1234 031 035	
40/.04	●	0234 021 040	0234 025 040	1234 031 040	
45/.04	○	0234 021 045	0234 025 045	1234 031 045	
50/.04	●	0234 021 050	0234 025 050	1234 031 050	
60/.04	●	0234 021 060	0234 025 060	1234 031 060	
25/.07	●	0237 021 025	0237 025 025	1237 031 025	
30/.06	●	0236 021 030	0236 025 030	1236 031 030	
35/.06	●	0236 021 035	0236 025 035	1236 031 035	
40/.06	●	0236 021 040	0236 025 040	1236 031 040	



Assortments

STERILE

Blister of 4 instruments	Mtwo® working part 16 mm		Mtwo® working part 21 mm	
	21 mm	25 mm	25 mm	31 mm
10/.04, 15/.05, 20/.06, 25/.06	0007 021 701	0007 025 711	0007 025 701	0007 031 701
30/.05, 35/.04, 40/.04, 25/.07	0007 021 702	0007 025 702	-	0007 031 702
Blister of 6 instruments	21 mm	25 mm	25 mm	31 mm
2 x 10/.04, 15/.05, 20/.06 each	0230 021 456	0230 025 456	-	-
2 x 25/.06, 30/.05, 35/.04, 40/.04, 25/.07	0230 021 457	0230 025 457	-	-
2 x 10/.04, 15/.05, 20/.06 each	-	-	1230 025 456	-
2 x 25/.06, wp 21 mm, 30/.05, 35/.04, 40/.04, 25/.07, wp 16 mm	-	1230 025 457	-	-
2 x 30/.06, 35/.06, 40/.06 each	-	0236 025 203	-	-
2 x 45/.04, 50/.04, 60/.04 each	-	0234 025 246	-	-

Retreatment files

Blister of 6 instruments

STERILE

Size/Taper	21 mm
R 15/.05	○ 0232 021 015
R 25/.05	● 0232 021 025
3 x R 15/.05, R 25/.05 each	0232 021 202



Mtwo® SystemBox

With module for easy organisation and storage of Mtwo® instruments, instruments not included, autoclavable

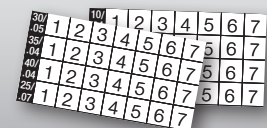
REF _____ 0239



Mtwo® Control Sticker

16 Control Stickers for the basic sequence
12 Control Stickers for additional sizes,
self-adhesive, autoclavable

REF _____ 0491



Mtwo® Gutta-Percha

Box of 60 pieces

Size/Taper		28 mm
25/.06	●	0220 628 025
30/.05	●	0220 528 030
35/.04	●	0220 428 035
40/.04	●	0220 428 040
45/.04	○	0220 428 045
50/.04	●	0220 428 050
60/.04	●	0220 428 060
25/.07	●	0220 728 025
30/.06	●	0220 628 030
35/.06	●	0220 628 035
40/.06	●	0220 628 040
20 x 25/.06, 10 x 30/.05, 35/.04, 40/.04, 25/.07 each		0220 028 457



Mtwo® Paper Points

STERILE

Box of 144 pieces

Size/Taper		29 mm
25/.06	●	0225 629 025
30/.05	●	0225 529 030
35/.04	●	0225 429 035
40/.04	●	0225 429 040
45/.04	○	0225 429 045
50/.04	●	0225 429 050
60/.04	●	0225 429 060
25/.07	●	0225 729 025
30/.06	●	0225 629 030
35/.06	●	0225 629 035
40/.06	●	0225 629 040
48 x 25/.06, 24 x 30/.05, 35/.04, 40/.04, 25/.07 each		0225 029 457



GUTTAFUSION® Obturators

Blister of 6 Obturators

Size		1 Blister	5 Blister
20	●	1541 000 020	1542 000 020
25	●	1541 000 025	1542 000 025
30	●	1541 000 030	1542 000 030
35	●	1541 000 035	1542 000 035
40	●	1541 000 040	1542 000 040
45	○	1541 000 045	-
50	●	1541 000 050	-
55	●	1541 000 055	-



Made entirely of gutta-percha



GUTTAFUSION® Size Verifier

Blister of 6 Size Verifier

Size		1 Blister
20	●	1508 000 020
25	●	1508 000 025
30	●	1508 000 030
35	●	1508 000 035
40	●	1508 000 040
45	○	1508 000 045
50	●	1508 000 050
55	●	1508 000 055
25-35		1508 000 305



Made of nickel titanium



Mtwo® Basic Kit

- Kit with instruments in 25 mm working length:
- 1 blister of 6 instruments Mtwo®, 2x 10/.04, 15/.05, 20/.06 each, 21 mm working part
- 1 blister of 6 instruments Mtwo®, 2x 25/.06, 21 mm working part, 1x 30/.05, 35/.04, 40/.04, 25/.07 each, 16 mm working part
- 3 plastic training blocks
- CD ROM, Mtwo® user card

REF _____ 0238 025 000



Interim Stand

- For chairside storing and cleaning of root canal instruments during treatment



REF _____ 0495

Refills for the Interim Stand

- Foam discs
- 55 foam discs



REF _____ 0496

Enhanced safety for you and your patients

- All Mtwo® instruments come in sterile blister packs.
- No sterilisation prior to first use.
- Ready to use instruments, individually packed.
- TÜV-certified Quality Management.



Look for the red dot.
Over 30 years' experience
in sterile endo products.

Please contact us for more information on the Mtwo® system:

- Mtwo® User Card
- Mtwo® User Brochure
- Mtwo® Study Abstracts
- Mtwo® Torque Card
- Mtwo® Retreatment File
Instructions for Use



VDW GmbH

Bayerwaldstr. 15 • 81737 Munich • Germany
Tel. +49 89 62734-0 • Fax +49 89 62734-304
www.vdw-dental.com • info@vdw-dental.com