

# Air Displaced Obturation (ADO)

## A Revolution in the Art of Filling Root Canals

Ultradent's innovation Endo Rez® revolutionised the art of filling the root canal. The introduction of Air Displaced Obturation (ADO) is the fastest growing obturation technique in the USA.

Conventional obturation is now a thing of the past. Delivering apically a hydrophilic resin based biocompatible root canal sealer will assist dentists to save time, money, stress and eliminate countless GP points to achieve optimal results in sealing the root canal. The added new technology will make it possible to immediately place a direct restoration.



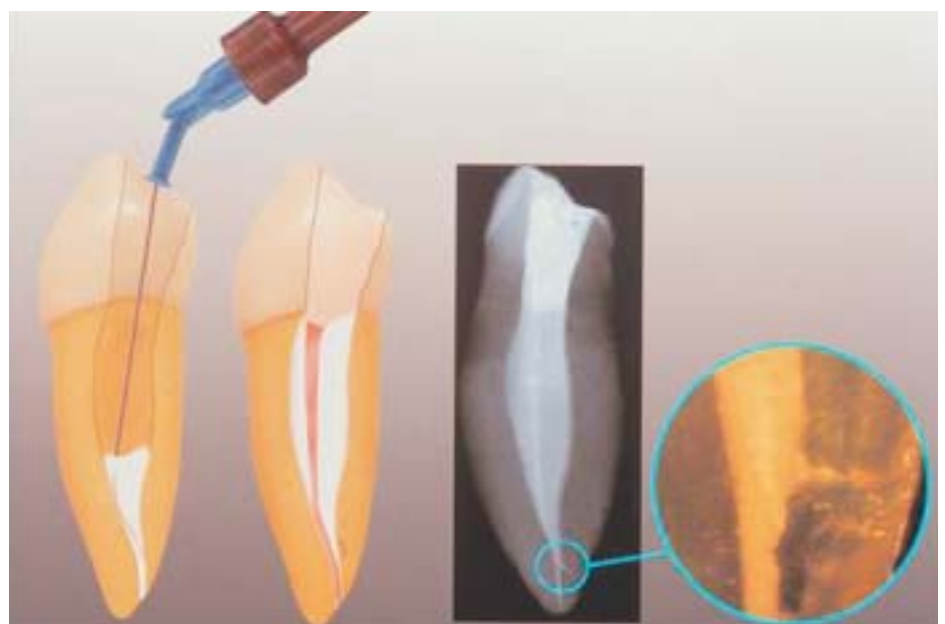
### So what exactly is Endo REZ® Dual Cure?

Endo REZ® is a two part, dual cure set endodontic sealer and filler based on UDMA resin - the same type of resins used today as orthopaedic bone cements so biocompatibility is assured. Endo REZ® displays the same radiopacity as GP, thus, simplifying radiographic interpretation.

What makes Endo REZ® even more exciting is its hydrophilic properties and its unique apical delivery system. These two features combine to improve sealing ability, eliminate air entrapment in the canals and remove the "guesswork" normally associated with sealer placement. Endo REZ® has superior flow and wetting properties which assist in sealing, even in slightly moist canals. SEM photography has shown Endo REZ® penetrating into unseen lateral canals and dentinal tubules to form a "mechanical lock" with the canal. This ensures a tight hematic seal - try doing that with your current sealer.

### Is Endo REZ Dual Cure easy to use?

Endo REZ® Dual Cure is easily and conveniently mixed 14 times via a specifically designed auto mix nozzle that attaches directly into a unique Skinni Syringe. The precise diameter of the Skinni Syringe guarantees that the exact amount of pressure is applied to the Endo REZ to allow safe & controlled delivery into the canal. The use of 29G Navitip cannulas, allow the smooth delivery of Endo REZ® Dual Cure into the canal - filling from the apex up with no air entrapment. Once canals have been filled 1/3 of the way, Gutta Percha can be placed into the canal to complete the obturation process. Then, when the root canal is successfully filled with Endo REZ® Dual Cure, the 2-3 mm coronal portion can be set initially by using your curing light. This will allow you to place a direct restoration on the tooth. The rest of the Endo REZ sealer in the canal will chemically set in 12-15 minutes.



Endo REZ Obturation



Dispensing Endo REZ

### Interested? Why wait?

For a beautiful, consistent, predictable result we have the solution!

Find out more about Endo REZ Dual cure. Experience the benefits of Ultradent AET & ADO Endo System. Contact your GUNZ representatives or ring our customer service at 1800 025 300.